



Your Network's Edge®



ONELAYER

RAD and OneLayer Private 5G/ LTE Solution: Secure, Reliable Campus Connectivity

Private 5G/LTE networks are transforming campus connectivity by providing high-density coverage, seamless mobility, and wire-free industrial operations. As adoption grows, enterprises are evolving these networks into fully converged OT and IT infrastructures, streamlining policies and operations across the entire campus.

To meet the diverse requirements of business devices and applications, 5G/LTE gateways extend private mobile network connectivity to a wide range of endpoints—including legacy controllers via serial port interfaces, industrial machinery linked to campus cloud-hosted controllers through Ethernet-based protocols, and newly deployed IoT sensors leveraging Wi-Fi and LoRaWAN.

To meet campus requirements for reliability and resiliency, intelligent traffic steering and dynamic switchover are introduced between the private network and the public cellular network. The joint solution from RAD and OneLayer strengthens campus network reliability while maintaining secure access policies across all campus endpoints and networks.

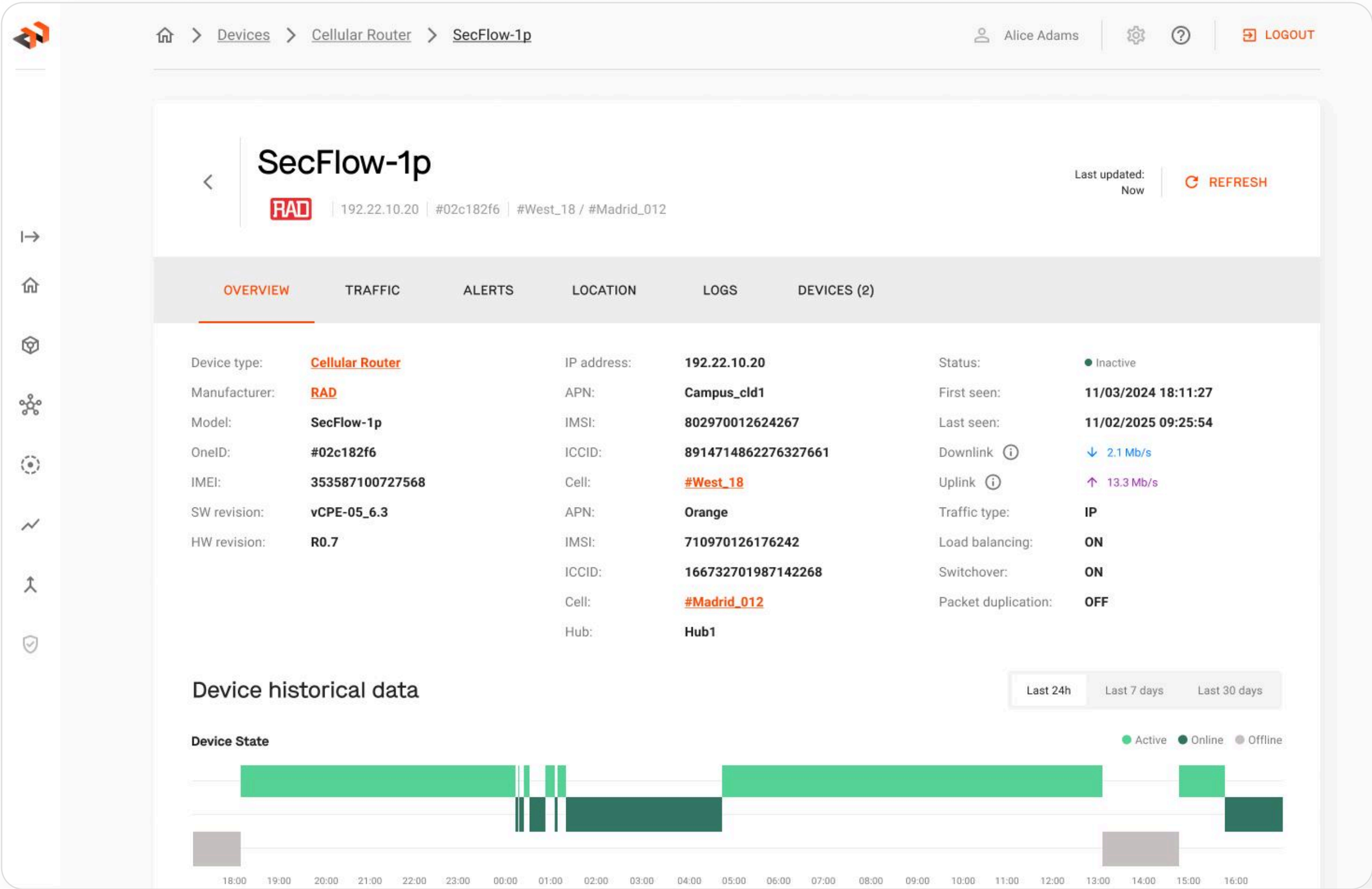
The Challenge:

As campuses are expanding their operations to include private 5G/LTE networks, they are required to maintain reliability and ensure seamless connectivity across campus.

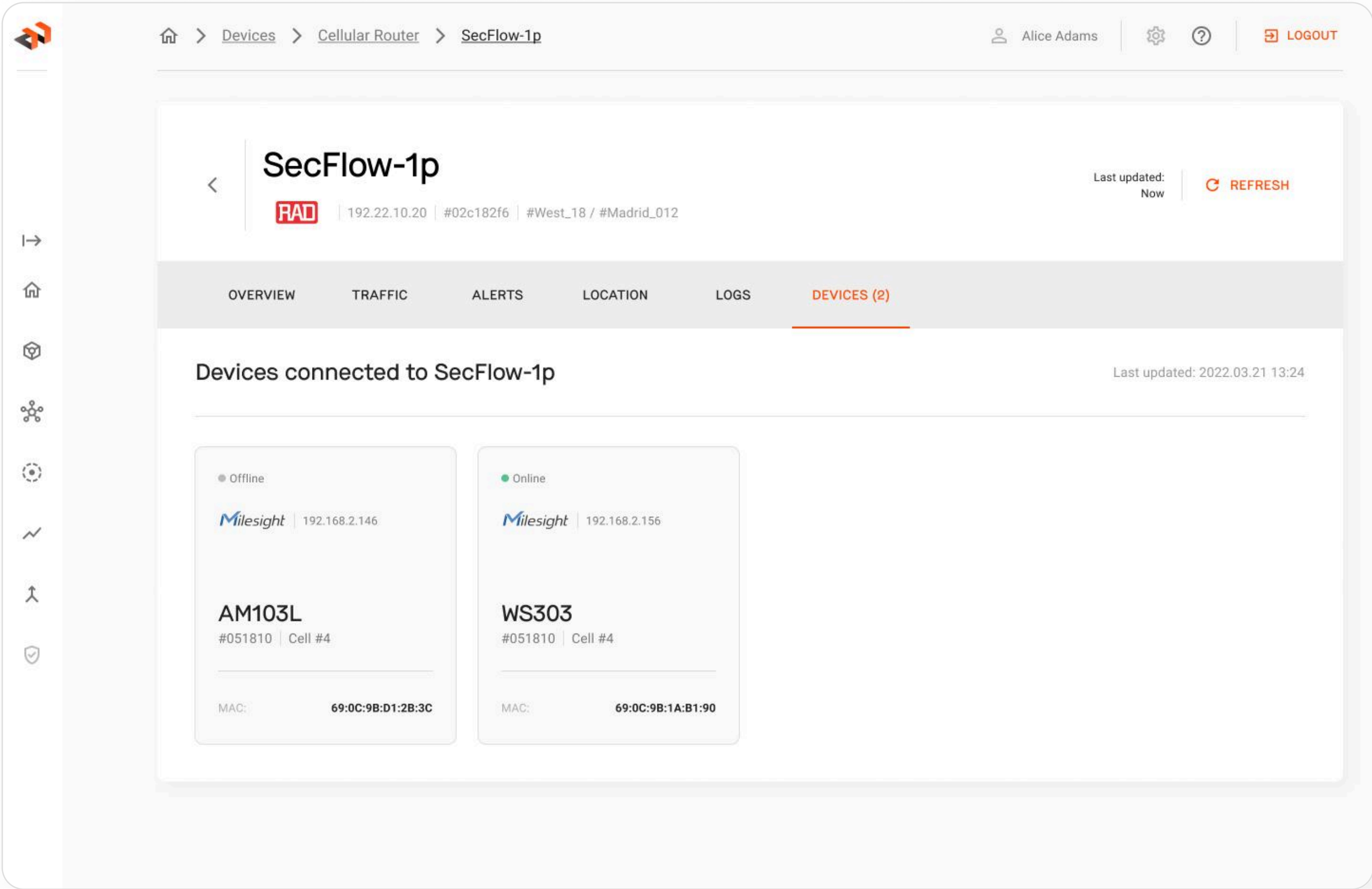
The Solution:

RAD cellular gateways with dual-link, transport-agnostic technology, enhance reliability through intelligent load balancing and packet duplication across two network links. This ensures seamless connectivity by mitigating coverage gaps and adapting to deteriorating network conditions. OneLayer provides a comprehensive, unified view of all campus endpoints by seamlessly integrating data from mobile cores and RAD gateways. This enables effective security policy implementation and enforcement across networks, ensuring consistent protection for campus resources.

Device data view:
current status and historical behavior over time



Devices behind cellular router:
see which devices are connected to the cellular router.



Industrial machinery visibility

Expanding campus visibility to brownfield equipment, connected via cellular gateways to the campus network, streamlining operations and security beyond 5G-enabled devices.

Uniform security policy across networks

Enterprises utilize public connectivity alongside campus networks to enhance reliability, reinforce mission-critical traffic resiliency, and ensure secure, seamless campus-wide connectivity. OneLayer and RAD deliver unified visibility and consistent zero-trust security for devices connected to private and public 5G/LTE networks, whether simultaneously or alternately.

Ethernet traffic security

Ethernet-based industrial protocols, such as Profinet and EtherCAT, are widely used in industrial networks and are now extending to private cellular networks. OneLayer and RAD ensure zero-trust security for both IP-based and Ethernet-based traffic, safeguarding industrial communications across the entire network.



About OneLayer

OneLayer provides advanced asset management, operational intelligence, and zero trust security for private LTE and 5G networks. Its technology empowers enterprises to manage their private cellular networks seamlessly, eliminating the need for cellular expertise. Learn more at www.OneLayer.com



About RAD

RAD is a global leader in networking edge solutions. As an industry pioneer for over 40 years, RAD reliably supplies communications service providers and critical infrastructure operators in over 150 countries with best-of-breed Carrier Edge, industrial IoT, 5G xHaul, and critical operational network solutions.

RAD co-innovates solutions with customers, offering always-on connectivity from anywhere, In addition to data-driven, AI-powered, actionable insights at a glance. Founded in 1981, RAD serves as the anchor of the RAD Group, an umbrella of independent companies that develop diverse networking and telecom solutions. <https://www.rad.com/>

Start Your Journey
to Secure Private
Wireless Networks

Contact OneLayer now to learn more about our Digi integration and enterprise wireless solution.

Visit onelayer.com to schedule a personalized demo or email us at contact@onelayer.com